



Kaikohe Christian School Weekly Newsletter

THIS WEEK'S MEMORY VERSE

"Then you will know the truth, and the truth will set you free". **John 17:17**

NEXT WEEK'S MEMORY VERSE

"For your love is ever before me, and I walk continually in your truth". **Psalms 26:3**

[For upcoming events please visit our events and school calendar website page](#)

TERMS AND HOLIDAYS 2018:

- **Term 4 Ends** - Thursday 13th December (Public holiday: Labour Day - Monday 22 Oct)

BOARD OF TRUSTEES MEETING

- **Date:** Tuesday 23rd October
- **Time:** 4pm
- **Venue:** Kaikohe Christian School

PRIZE GIVING CUPS

All prize-giving cups from last year 2017 need to be returned to the office by Friday 19th October.
Thank you.

PRIZE GIVING DATES

Seniors - Year 11 to 13 Students (year 9 & 10 students to attend & support)

- **Date:** Wednesday 7th November
- **Time:** 1pm

Waimate Campus

- **Date:** Wednesday 12th December
- **Time:** 11am

Kaikohe Campus - Year 1 to 10

- **Date:** Thursday 13th December
- **Time:** 11am

SECONDARY NCEA STUDENTS

NCEA Exams begin on Friday 9th November. Students have been given their Examination

Admission slips today and exam regulations information. Please put these in a safe place as the admission slip must be brought to each exam.

VERY INFORMATION: ATTENDANCE

Classes and learning will be continuing at school for all NCEA students till the end of term. There is **no** home study leave during the exam period. Study will occur at school with teachers.

Uniform must be worn to all NCEA examinations.

Any questions please contact Yvonne Vujcich (09) 4052626 or (027) 4915218

SCHOOL GROUP PHOTOS

If you would like to order any of the following group photos below, ordering forms are available at the office.

- Maori Performing Arts \$15.00
- Samoan Ministry Team \$15.00
- Netball Junior Team \$15.00
- Netball Senior Team \$15.00
- Kapa Haka \$15.00
- Basketball Senior Team \$15.00

A sample of photos can be viewed at the office.

SPORTS ACADEMY

Kia ora whanau Sports Academy starts again next week. Be at school by 10 to 7 for a 7am start.

ATTENDANCE

A big thank you to all parents and caregivers in regards to attendance we reached our milestone of 90% overall. We will continue to keep the percentage up this term and finish the year off strong. Once again thank you one and all.

“He waka eke noa”

“Everyone working together”

NETBALL AND TOUCH

Twilight netball and Touch begins this week Netball Wednesday 6pm and Touch Thursday 4-15pm onwards. Last night our senior mixed netball team won both their first two games.

In the Touch, we would like to enter an Under 13's, Seniors, and a Social Adult Mixed. Tonight is grading and next week is the beginning of the competition. Any parents, teachers, and students keen on playing please come along or get in touch with Matua Te Rangi Allen at the Kura.

“Whaea te iti kahurangi mehemea e puohu koe me he maunga teitei”

“Seek the heights but if you should fall let it be to a loftier mountain”

SCHOOL UNIFORMS

We have had a 95% success rate for correct uniforms Years 7-13 beginning this term so thank you to all parents for your diligence. Tomorrow there will be a uniform check and those students that are not in correct uniform will be given a note to take home informing parents that their child cannot return to school until they are correctly attired. There are roman sandals on special for \$15 at the Warehouse as well as school leather lace up shoes.

“Mena ko te hunga tika te rangatiratanga ka hari te Iwi”

“When the righteous are in authority the people rejoice”

WHANAU HUI

There will be a whanau hui next Tuesday in the assembly hall at 6pm for those that are in the Kapa Haka Ropu, those interested in Manu Korero and Sports. We will discuss plans for 2019 ensuring to involve all parents as well as finances to date. A big thank you to all that purchased hangi. Please contact myself Te Rangi Allen or Whaea Michelle should you need to inquire further. Please be on time.

“Nou te rourou naku te rourou ka ora ai te Iwi”

“With your basket and mine, the people will be fed”

NEW ENROLMENT-BASED MEASURE OF NCEA ATTAINMENT

NZQA and the Ministry of Education have implemented a change to the way NCEA and University Entrance attainment is reported.

The new enrolment-based measure of NCEA attainment will replace NZQA's roll - based and participation-based measures. It provides a more precise picture of attainment. It counts all domestic students in years 11 to 13 aged less than 19 on 1 January, rather than taking a snapshot of students as at 1 July. It also counts up to three ethnicities students identify with, rather than limiting this to just one.

As a result, NZQA advises that most schools will see a change in their attainment rates. It is a statistical adjustment that doesn't reflect school performance, teaching practice or an individual student's results. Also, whilst NCEA and University Entrance attainment rates do change for most schools, the amount of improvement in student attainment over time is similar and positive using the enrolment-based measure.

NZQA has consulted with schools on the way attainment is reported at a school level. The enrolment-based measure will be used for reporting NCEA and University Entrance attainment statistics from January 2019.

More information can be found on the NZQA website:

<https://www.nzqa.govt.nz/studying-in-new-zealand/secondary-school-and-ncea/find-information-about-a-school/secondary-school-statistics/>

MAORI PERFORMING ARTS:

A reminder to parents of Year 9 and 10 students that perform Kapa Haka they are able to do NCEA Levels 1, 2, and 3 Maori Performing Arts unit standards next year.

PARENT & STUDENT PORTAL YEAR 9 - 13

The Kamar Parent & Student Portal is available to all parents for students in Year 9 – Year 13. The following information is currently available – notices, calendar, student timetables, live attendance, pastoral notes, recognition's (C.A.R.E points), student reports, students results, and student pathways.

Please note: Student information is not publicly available and has only been shared with students and parents/caregivers who each have their own unique password. Please, keep your password confidential.

If you have lost your username and password please contact the school office and request a copy.

The poster features a photograph of Rod Walsh, a man with grey hair wearing a blue shirt and tie, smiling. To his right, a blue circular logo contains the text 'NZ Tour' in white. Above the logo, a quote reads: 'Hear the good news that the biblical account of origins is not only historically accurate, but makes better sense of the evidence.' Below the photo, the text 'CREATION MINISTRIES INTERNATIONAL' is written in small letters, followed by 'ROD WALSH' in large bold letters, and 'MODEL ARK BUILDER AND CMI SPEAKER' in smaller letters below that. The event details are listed: 'Tuesday 30 October 2018 at 2.15pm', 'Noah's Ark—Deluge of Evidence', and 'Kaikohe Christian School 52 Mangakahia Road, Kaikohe'. Contact information includes 'Enquiries: phone church office on 09 401 1873'. At the bottom, it states 'Creation resources will be available' and provides 'CMI New Zealand' contact details: phone 09 537 4818, email nzministry@creation.com, and the website CREATION.com.

Hear the good news that the biblical account of origins is not only historically accurate, but makes better sense of the evidence.

CREATION MINISTRIES INTERNATIONAL

ROD WALSH

MODEL ARK BUILDER AND CMI SPEAKER

NZ Tour

Tuesday 30 October 2018
at 2.15pm

Noah's Ark—Deluge of Evidence

Kaikohe Christian School
52 Mangakahia Road, Kaikohe

Enquiries: phone church office on 09 401 1873

Creation resources will be available

CMI New Zealand ☎ 09 537 4818 ✉ nzministry@creation.com
CREATION.com



The poster is for a 'Fireworks Extravaganza' at Springbank School. It features a dark blue background with colorful fireworks and confetti illustrations. The school's logo is at the top left. The event title is in a large, stylized font. Below it, the date is clearly stated. Ticket information is presented in two columns separated by a vertical line. A line of text describes the event as fun, food, and live entertainment, with EFTPOS available. Another line states it's a family-friendly event with no alcohol and bag searches. The address is prominently displayed. A 'Thanks to our event sponsors' section is at the bottom, featuring logos for More FM, Top Energy, Bay of Islands Whangarei Community Board, Hunting & Fishing, and Broad Spectrum.

SPRINGBANK SCHOOL

Fireworks Extravaganza

SATURDAY 3RD NOVEMBER

GATES OPEN 6:30PM | ENTRY \$5 PER PERSON
FIREWORKS 9PM | UNDER 5-YRS FREE

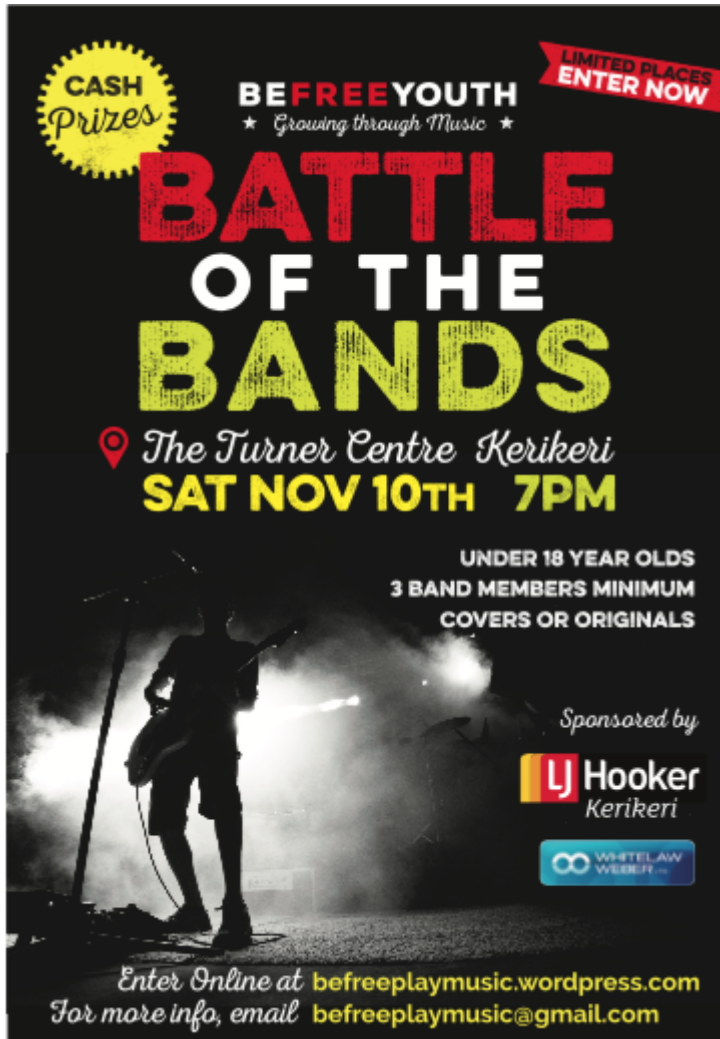
COME ALONG FOR A NIGHT OF FUN, FOOD, & LIVE ENTERTAINMENT | EFTPOS AVAILABLE

THIS IS A FAMILY FRIENDLY EVENT
ALCOHOL IS STRICTLY PROHIBITED
BAGS WILL BE SEARCHED ON ENTRY

78 WAIMATE NORTH ROAD

THANKS TO OUR EVENT SPONSORS

MORE FM **TOP ENERGY** **Bay of Islands Whangarei Community Board** **Hunting & Fishing** **BROADSPECTRUM**



BE FREE YOUTH 'BATTLE OF THE BANDS'

Kia ora!

On Saturday, November 10th we are holding our first ever 'Battle of the Bands' competition at The Turner Centre, Kerikeri.

It promises to be an exciting event, judged by a panel of music professionals, and with an audience vote as well, and provides an excellent opportunity for young musicians to perform in front of an appreciative audience.

We are lucky to have found some willing sponsors, which allows us to award cash prizes, and have more sponsors still to confirm. Currently, First Prize is set at \$200 with some additional benefits thrown in too.

The competition rules have altered a little, and it is now open to Under 18s with no lower age limit, to allow for bands who have members aged under 13 years old. There are some more rule changes that you may want to check.

If there are any youth who are keen to perform as a band. Rules and entry form can be found on our website: <https://befreeplaymusic.wordpress.com/battle-of-the-bands/>

Entries close on **Monday 5th November**, and places are on a first-come, first-served basis.

