



Kaikohe Christian School Weekly Newsletter

THIS WEEK'S MEMORY VERSE

Jesus answered, "I am the way and the truth and the life. No one comes to the Father except through me." - **John 14:6**

NEXT WEEK'S MEMORY VERSE

"Then you will know the truth, and the truth will set you free". **John 17:17**

[For upcoming events please visit our events and school calendar website page](#)

TERMS AND HOLIDAYS 2018:

- **Term 4 Ends** - Thursday 13th December

BOARD OF TRUSTEES MEETING

- **Date:** Tuesday 20th November
- **Time:** 4pm
- **Venue:** Kaikohe Christian School

PRIZE GIVING DATES

Seniors - Year 11 to 13 Students (year 9 & 10 students to attend & support)

- **Date:** Wednesday 7th November
- **Time:** 1pm

Waimate Campus

- **Date:** Wednesday 12th December
- **Time:** 11am

Kaikohe Campus - Year 1 to 10

- **Date:** Thursday 13th December
- **Time:** 11am

SECONDARY NCEA STUDENTS

NCEA Exams begin on Friday 9th November. Students have been given their Examination Admission slips today and exam regulations information. Please put these in a safe place as the admission slip must be brought to each exam.

VERY INFORMATION: ATTENDANCE

Classes and learning will be continuing at school for all NCEA students till the end of term. There is **no** home study leave during the exam period. Study will occur at school with teachers.

Uniform must be worn to all NCEA examinations.

Any questions please contact Yvonne Vujcich (09) 4052626 or (027) 4915218

SPORTS ACADEMY

Kia ora whanau Sports Academy starts again next week. Be at school by 10 to 7 for a 7am start.

ATTENDANCE

A big thank you to all parents and caregivers in regards to attendance we reached our milestone of 90% overall. We will continue to keep the percentage up this term and finish the year off strong. Once again thank you one and all.

“He waka eke noa”

“Everyone working together”

NETBALL AND TOUCH

Twilight netball and Touch begins this week Netball Wednesday 6pm and Touch Thursday 4-15pm onwards. Last night our senior mixed netball team won both their first two games.

In the Touch we would like to enter an Under 13's, Seniors, and a Social Adult Mixed. Tonight is grading and next week is the beginning of the competition. Any parents, teachers, and students keen on playing please come along or get in touch with Matua Te Rangi Allen at the Kura.

“Whaea te iti kahurangi mehemea e puohu koe me he maunga teitei”

“Seek the heights but if you should fall let it be to a loftier mountain”

SCHOOL UNIFORMS

We have had a 95% success rate for correct uniforms Years 7-13 beginning this term so thank you to all parents for your diligence. Tomorrow there will be a uniform check and those students that are not in correct uniform will be given a note to take home informing parents that their child cannot return to school until they are correctly attired. There are roman sandals on special for \$15 at the Warehouse as well as school leather lace up shoes.

“Mena ko te hunga tika te rangatiratanga ka hari te Iwi”

“When the righteous are in authority the people rejoice”

WHANAU HUI

There will be a whanau hui next Tuesday in the assembly hall at 6pm for those that are in the Kapa Haka Ropu, those interested in Manu Korero and Sports. We will discuss plans for 2019 ensuring to involve all parents as well as finances to date. A big thank you to all that purchased hangi. Please

contact myself Te Rangi Allen or Whaea Michelle should you need to inquire further. Please be on time.

“Nou te rourou naku te rourou ka ora ai te Iwi”

“With your basket and mine the people will be fed”

NEW ENROLMENT-BASED MEASURE OF NCEA ATTAINMENT

NZQA and the Ministry of Education have implemented a change to the way NCEA and University Entrance attainment is reported.

The new enrolment-based measure of NCEA attainment will replace NZQA's roll - based and participation-based measures. It provides a more precise picture of attainment. It counts all domestic students in years 11 to 13 aged less than 19 on 1 January, rather than taking a snapshot of students as at 1 July. It also counts up to three ethnicities students identify with, rather than limiting this to just one.

As a result, NZQA advises that most schools will see a change in their attainment rates. It is a statistical adjustment that doesn't reflect school performance, teaching practice or an individual student's results. Also, whilst NCEA and University Entrance attainment rates do change for most schools, the amount of improvement in student attainment over time is similar and positive using the enrolment-based measure.

NZQA has consulted with schools on the way attainment is reported at a school level. The enrolment-based measure will be used for reporting NCEA and University Entrance attainment statistics from January 2019.

More information can be found on the NZQA website:

<https://www.nzqa.govt.nz/studying-in-new-zealand/secondary-school-and-ncea/find-information-about-a-school/secondary-school-statistics/>

MAORI PERFORMING ARTS:

A reminder to parents of Year 9 and 10 students that perform Kapa Haka they are able to do NCEA Levels 1, 2, and 3 Maori Performing Arts unit standards next year.

PARENT & STUDENT PORTAL YEAR 9 - 13

The Kamar Parent & Student Portal is available to all parents for students in Year 9 - Year 13. The following information is currently available - notices, calendar, student timetables, live attendance, pastoral notes, recognition's (C.A.R.E points), student reports, students results, and student pathways.

Please note: Student information is not publicly available and has only been shared with students and parents/caregivers who each have their own unique password. Please, keep your password confidential.

If you have lost your username and password please contact the school office and request a copy.

NGAPUHI BASKETBALL TRIALS

If you are interested in trailling out, please see the flyer for more information below.



TRIALS

AGES: U13 / U15 / U17 / U19 Boys & Girls

DATE: Sunday 28th October

Time: 8.30am Registration

Venue: Waipapa Bay Sport Stadium

Cost: \$5 per Person

All Players Must Bring a Water Bottle

Packed Lunch, Towel, Shower Clothes

NAU MAI HAERE MAI

Please contact

Mel Rameka 0274165093 or melvin.rameka@ngapuhi.org

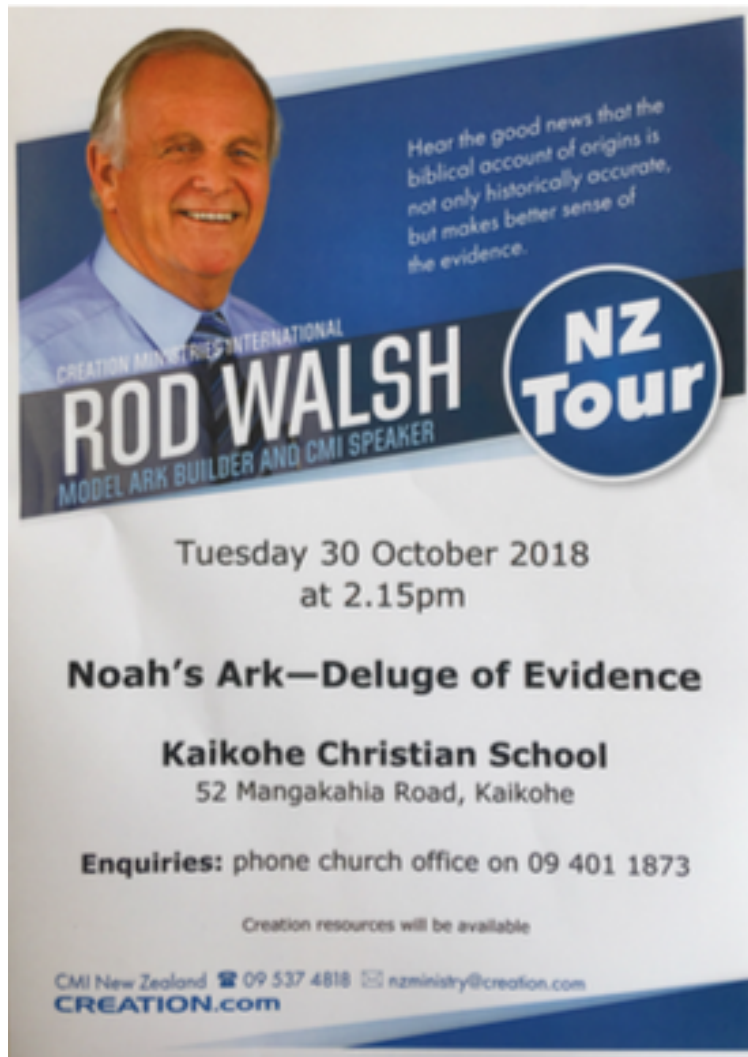
Del Rameka 0278776961 or mamadel1124@hotmail.com

Joe Henare 0210260599 or via facebook Messenger

Mata Cameron via Facebook messenger

ROD WALSH - NEW ZEALAND TOUR

Parents and Caregivers are welcome to come.



SOFTBALL

If you would like to help out by coaching their children's respective age group teams this would be much appreciated. We definitely require an Intermediate (Year 7 & 8) coach, but not sure about year 5 & 6. Please see flyer below for more information. Please also note the correct date is: Sunday 18th November 2018.



**SUNDAY 18 NOV
2019
NORTHLAND
PLAY
SOFTBALL
DAY.
LINDVART PARK
KAIKOHE.
REGISTER BY CONTACTING
YOUR CLUB.
TRAIN WITH
EXPERIENCED PLAYERS
FROM AROUND THE
WORLD!**

9AM
COACHING SESSION

11AM
PITCHING &
CATCHING SESSION
(BOTH JUNIOR &
SENIOR)

1PM
JUNIOR SKILLS
SESSION

3PM
SENIOR SKILLS
SESSION

TO REGISTER

PLEASE CONTACT
YOUR CLUB

IF YOU DON'T HAVE
GLOVE, DON'T
WORRY WE WILL
BRING SPARES!!



The poster is for a 'Fireworks Extravaganza' at Springbank School. It features a dark blue background with colorful fireworks and confetti illustrations. The school's logo is at the top left. The event title is in a large, stylized font. Below it, the date is clearly stated. Ticket information is presented in two columns separated by a vertical line. A line of text describes the event as a night of fun, food, and entertainment, noting that EFTPOS is available. Another line states it is a family-friendly event with alcohol prohibited and bag searches. The location is given in a large, bold font. At the bottom, a line of text thanks event sponsors, followed by a row of logos for MORE FM, TOP ENERGY, Bay of Islands Whangarei Community Board, Hunting & Fishing, and BROADSPECTRUM.

SPRINGBANK SCHOOL

Fireworks Extravaganza

SATURDAY 3RD NOVEMBER

GATES OPEN 6:30PM | ENTRY \$5 PER PERSON
FIREWORKS 9PM | UNDER 5-YRS FREE

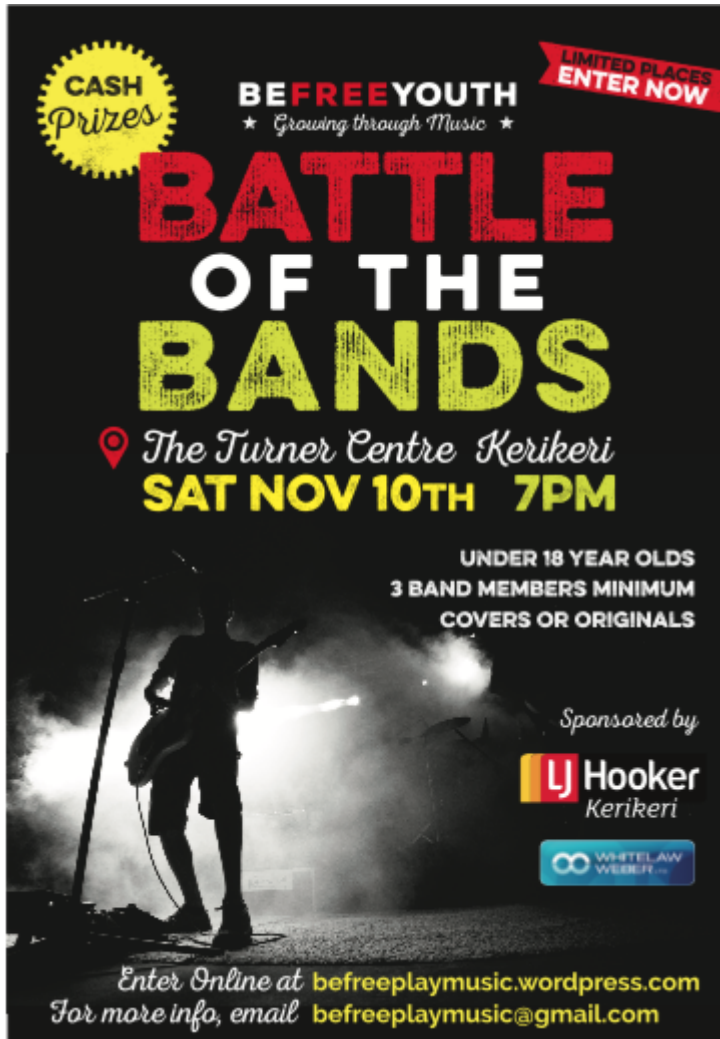
COME ALONG FOR A NIGHT OF FUN, FOOD, & LIVE ENTERTAINMENT | EFTPOS AVAILABLE

THIS IS A FAMILY FRIENDLY EVENT
ALCOHOL IS STRICTLY PROHIBITED
BAGS WILL BE SEARCHED ON ENTRY

78 WAIMATE NORTH ROAD

THANKS TO OUR EVENT SPONSORS

MORE FM **TOP ENERGY** Bay of Islands Whangarei Community Board **Hunting & Fishing** **BROADSPECTRUM**



BE FREE YOUTH 'BATTLE OF THE BANDS'

Kia ora!

On Saturday, November 10th we are holding our first ever 'Battle of the Bands' competition at The Turner Centre, Kerikeri.

It promises to be an exciting event, judged by a panel of music professionals, and with an audience vote as well, and provides an excellent opportunity for young musicians to perform in front of an appreciative audience.

We are lucky to have found some willing sponsors, which allows us to award cash prizes, and have more sponsors still to confirm. Currently, First Prize is set at \$200 with some additional benefits thrown in too.

The competition rules have altered a little, and it is now open to Under 18s with no lower age limit, to allow for bands who have members aged under 13 years old. There are some more rule changes that you may want to check.

If there are any youth who are keen to perform as a band. Rules and entry form can be found on our website: <https://befreeplaymusic.wordpress.com/battle-of-the-bands/>

Entries close on **Monday 5th November**, and places are on a first-come, first-served basis.

