



Kaikohe Christian School Weekly Newsletter

THIS WEEK'S MEMORY VERSE

Jesus answered, "I am the way and the truth and the life. No one comes to the Father except through me." **John 14:6**

NEXT WEEK'S MEMORY VERSE

"Your word is a lamp to my feet and a light for my path". **Psalm 119:105**

[For upcoming events please visit our events and school calendar website page](#)

TERMS AND HOLIDAYS 2018:

- **Term 4 Ends** - Thursday 13th December

BOARD OF TRUSTEES MEETING

- **Date:** Tuesday 20th November
- **Time:** 4pm
- **Venue:** Kaikohe Christian School

PRIZE GIVING DATES

Seniors - Year 11 to 13 Students (year 9 & 10 students to attend & support)

- **Date:** Wednesday 7th November
- **Time:** 1pm

Waimate Campus

- **Date:** Wednesday 12th December
- **Time:** 11am

Kaikohe Campus - Year 1 to 10

- **Date:** Thursday 13th December
- **Time:** 11am

KERIKERI HALF MARATHON - SATURDAY - 17 NOVEMBER 2018

Event Information

Step Out for Cancer

[Join the Cancer Society's Kerikeri Half Marathon team](#) and help provide care, comfort and hope for New Zealanders with cancer. Set up your own online fundraising page, where friends and whānau can sponsor your Half Marathon achievement or make a donation as part of your entry fee.

Term 4 Week 3 - 01/11/2018

Anyone who raises over \$200 through their online page will get a special Cancer Society 'Step out for Cancer' dri-fit T-shirt in recognition of their fundraising.

Step out today and you will help the Cancer Society provide:

- Free support services for people with cancer and their whānau
- Life-saving cancer research
- Cancer prevention campaigns

Start Area

- The start area will be based on Waiare Road, Okaihau just off State Highway 1.

Start Times

- Wheelchairs/Race Chairs: 7.25am
- Runners: 7.30am
- Competitive Walkers: 7.50am
- Hybrid (Run/Walkers): 7.55am
- Walkers: 8.00am

For health & safety reasons the Event Organisers reserve the right to modify the start times if required.

Pricing

Half Marathon

Category	Super Early Bird until 17/06/18	Early Bird 18/06/18 - 14/10/18	Standard 15/10/18 - 11/11/18
Individual Entry	\$53.00	\$60.00	\$70.00
Group/Corporate Team Entry	\$49.00	\$56.00	\$65.00

Entries for **Energize kids are only \$10!** All you have to is register online in the normal way and enter the code **ENERGIZE** (it has to be all capitals and spelt like that) and the child price will reduce to **\$10 instead of \$22**. Please note that we recommend all primary school kids be accompanied by a participating adult.

Event Numbers

- Entries received on or before Friday 9 November event numbers will be sent out.
- Entries received from Saturday 10 November – Sunday 11 November participants will need to collect their event numbers
- Thursday 15 November, 8.30am – 6.00pm at the ASB Northland Sports House, Kensington, Whangarei.
- Friday 16 November, 2.00pm – 7.00pm at the ThermaTech Tent, Kerikeri Domain, Cobham Road, Kerikeri
- Saturday 17 November, from 6.00am at the start line, Okaihau

Give it go this year!

Bodean Rogers - Energizer Mid North

SECONDARY NCEA STUDENTS

NCEA Exams begin on Friday 9th November. Students have been given their Examination Admission slips today and exam regulations information. Please put these in a safe place as the admission slip must be brought to each exam.

VERY IMPORTANT: ATTENDANCE

Classes and learning will be continuing at school for all NCEA students till the end of term. There is **no** home study leave during the exam period. Study will occur at school with teachers.

Uniform must be worn to all NCEA examinations.

Any questions please contact Yvonne Vujcich (09) 4052626 or (027) 4915218

NEW ENROLMENT-BASED MEASURE OF NCEA ATTAINMENT

NZQA and the Ministry of Education have implemented a change to the way NCEA and University Entrance attainment is reported.

The new enrolment-based measure of NCEA attainment will replace NZQA's roll - based and participation-based measures. It provides a more precise picture of attainment. It counts all domestic students in years 11 to 13 aged less than 19 on 1 January, rather than taking a snapshot of students as at 1 July. It also counts up to three ethnicities students identify with, rather than limiting this to just one.

As a result, NZQA advises that most schools will see a change in their attainment rates. It is a statistical adjustment that doesn't reflect school performance, teaching practice or an individual student's results. Also, whilst NCEA and University Entrance attainment rates do change for most schools, the amount of improvement in student attainment over time is similar and positive using the enrolment-based measure.

NZQA has consulted with schools on the way attainment is reported at a school level. The enrolment-based measure will be used for reporting NCEA and University Entrance attainment statistics from January 2019.

More information can be found on the NZQA website:

<https://www.nzqa.govt.nz/studying-in-new-zealand/secondary-school-and-ncea/find-information-about-a-school/secondary-school-statistics/>

MAORI PERFORMING ARTS:

A reminder to parents of Year 9 and 10 students that perform Kapa Haka they are able to do NCEA Levels 1, 2, and 3 Maori Performing Arts unit standards next year.

PARENT & STUDENT PORTAL YEAR 9 - 13

The Kamar Parent & Student Portal is available to all parents for students in Year 9 - Year 13. The following information is currently available - notices, calendar, student timetables, live attendance,

pastoral notes, recognition's (C.A.R.E points), student reports, students results, and student pathways.

Please note: Student information is not publicly available and has only been shared with students and parents/caregivers who each have their own unique password. Please, keep your password confidential.

If you have lost your username and password please contact the school office and request a copy.

SOFTBALL

If you would like to help out by coaching their children's respective age group teams this would be much appreciated. We definitely require an Intermediate (Year 7 & 8) coach, but not sure about year 5 & 6. Please see flyer below for more information. Please also note the correct date is: Sunday 18th November 2018.



**SUNDAY 18 NOV
2019
NORTHLAND
PLAY
SOFTBALL
DAY.
LINDVART PARK
KAIKOHE.
REGISTER BY CONTACTING
YOUR CLUB.
TRAIN WITH
EXPERIENCED PLAYERS
FROM AROUND THE
WORLD!**

9AM
COACHING SESSION

11AM
PITCHING &
CATCHING SESSION
(BOTH JUNIOR &
SENIOR)

1PM
JUNIOR SKILLS
SESSION

3PM
SENIOR SKILLS
SESSION

TO REGISTER

PLEASE CONTACT
YOUR CLUB

IF YOU DON'T HAVE
GLOVE, DON'T
WORRY WE WILL
BRING SPARES!!



The poster is for a 'Fireworks Extravaganza' at Springbank School. It features a dark blue background with colorful fireworks and confetti illustrations. The school's logo is at the top left. The event title is in a large, stylized font. Below it, the date is given. Ticket information is split by a vertical line. A paragraph describes the event as family-friendly with food and entertainment. Another paragraph states that alcohol is prohibited and bags will be searched. The address is prominently displayed. A line of text thanks event sponsors, followed by a row of logos for MORE FM, TOP ENERGY, Bay of Islands Whangarei Community Board, Hunting & Fishing, and BROADSPECTRUM.

SPRINGBANK SCHOOL

Fireworks Extravaganza

SATURDAY 3RD NOVEMBER

GATES OPEN 6:30PM | ENTRY \$5 PER PERSON
FIREWORKS 9PM | UNDER 5-YRS FREE

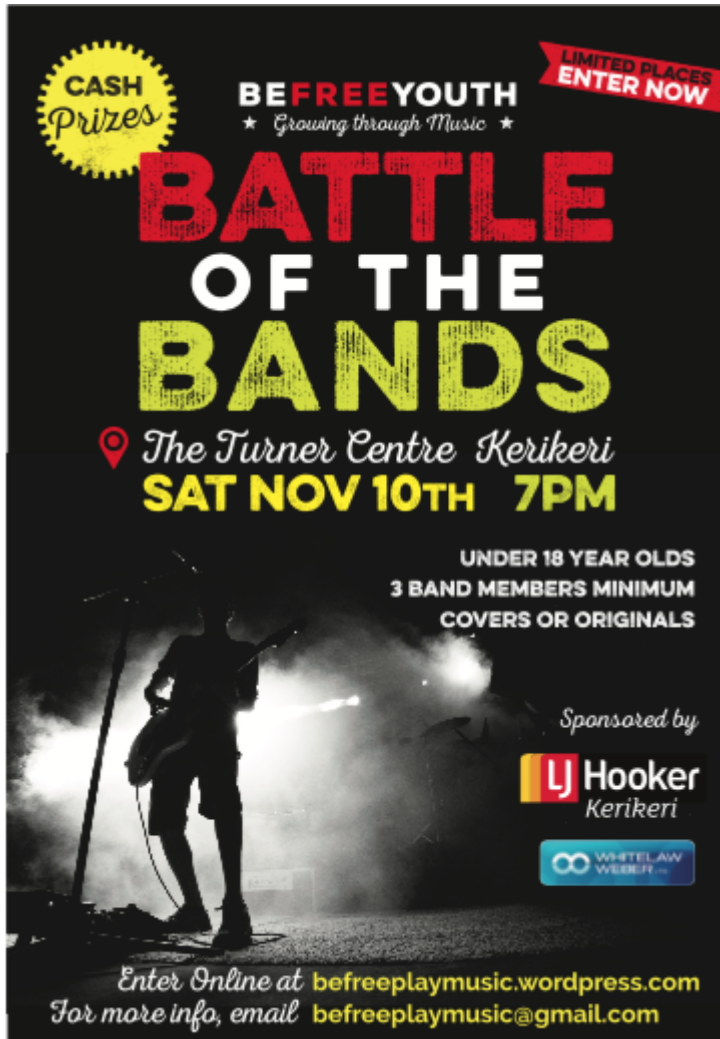
COME ALONG FOR A NIGHT OF FUN, FOOD, & LIVE ENTERTAINMENT | EFTPOS AVAILABLE

THIS IS A FAMILY FRIENDLY EVENT
ALCOHOL IS STRICTLY PROHIBITED
BAGS WILL BE SEARCHED ON ENTRY

78 WAIMATE NORTH ROAD

THANKS TO OUR EVENT SPONSORS

MORE FM **TOP ENERGY** Bay of Islands Whangarei Community Board **Hunting & Fishing** **BROADSPECTRUM**



BE FREE YOUTH 'BATTLE OF THE BANDS'

Kia ora!

On Saturday, November 10th we are holding our first ever 'Battle of the Bands' competition at The Turner Centre, Kerikeri.

It promises to be an exciting event, judged by a panel of music professionals, and with an audience vote as well, and provides an excellent opportunity for young musicians to perform in front of an appreciative audience.

We are lucky to have found some willing sponsors, which allows us to award cash prizes, and have more sponsors still to confirm. Currently, First Prize is set at \$200 with some additional benefits thrown in too.

The competition rules have altered a little, and it is now open to Under 18s with no lower age limit, to allow for bands who have members aged under 13 years old. There are some more rule changes that you may want to check.

If there are any youth who are keen to perform as a band. Rules and entry form can be found on our website: <https://befreeplaymusic.wordpress.com/battle-of-the-bands/>

Entries close on **Monday 5th November**, and places are on a first-come, first-served basis.

